

## Supplemental Data

### Nrd1 Interacts with the Nuclear Exosome

#### for 3' Processing of RNA Polymerase II Transcripts

Lidia Vasiljeva and Stephen Buratowski

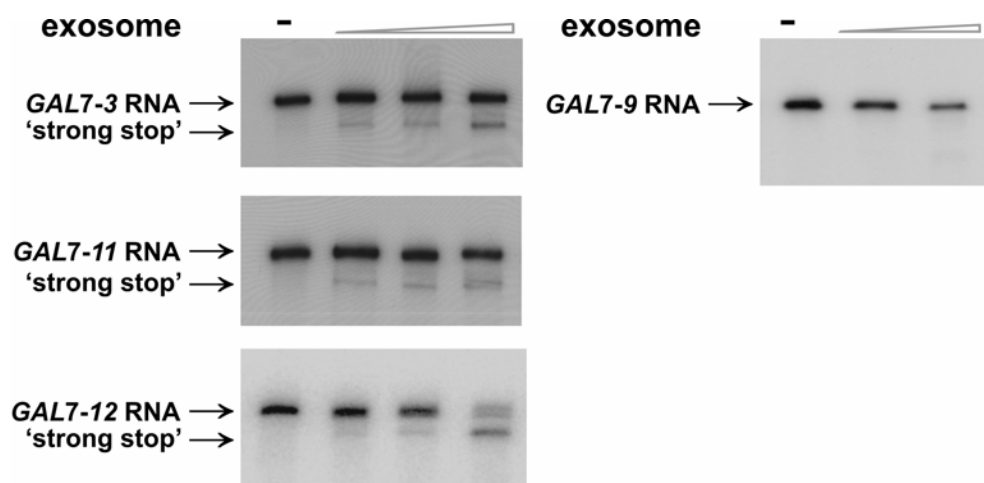


Figure S1. Exosome Digestion of *GAL7* Mutant Substrates

The indicated *GAL7* RNAs (see Figure 1A) were incubated with exosome from wild-type Nrd1 cells as in Figure 1C.

Table S1. Strains Used in This Study

WT/BY4741/ YF336	<i>MATa; ura3Δ0; leu2Δ0; his3Δ1; met15Δ0</i>	This study <sup>a</sup>
Rrp6-TAP/ YF581	<i>MATa; ura3Δ0; leu2Δ0; his3Δ1; met15Δ0;</i> <i>RRP6-TAP::HIS3</i>	This study <sup>a</sup>
rrp6Δ::KAN/ YF506	<i>MATa; ura3Δ0; leu2Δ0; his3Δ1; met15Δ0;</i> <i>rrp6Δ::KANMX</i>	Winzeler et al., 1999 <sup>c</sup>
rrp6Δ::TRP1/ YSB503	<i>MATa; ura3; leu2; his3; trp1; nab2::HIS3;</i> <i>rrp6Δ::TRP1</i> [pAC717 ( <i>NAB2, CEN, LEU2</i> )]	Roth et al., 2005
Nrd1-TAP/ YF817	<i>MATa; ura3Δ0; leu2Δ0; his3Δ1; met15Δ0;</i> <i>NRD1-TAP::HIS3</i>	This study <sup>a</sup>
EJS101-9d/ YF1165	<i>MATa; ura3-52; leu2-3,112; trp1-1; his3-11,15;</i> <i>nrd1Δ::HIS3; lys2Δ2; ade2-1; met2Δ1, can1-100;</i> [pRS316NRD1 ( <i>NRD1, URA3, CEN</i> )]	Steinmetz and Brow, 1996
nrd1-1/ YSB1752	<i>MATa; ura3-52; leu2-3,112; trp1-1; his3-11,15;</i> <i>nrd1Δ::HIS3; lys2Δ2; ade2-1; met2Δ1, can1-100;</i> [pRS424nrd1-1 ( <i>nrd1-1, TRP1, 2 μ ori</i> )]	This study
nrd1-2/ YSB1753	<i>MATa; ura3-52; leu2-3,112; trp1-1; his3-11,15;</i> <i>nrd1Δ::HIS3; lys2Δ2; ade2-1; met2Δ1, can1-100;</i> [pRS424nrd1-2 ( <i>nrd1-2, TRP1, 2 μ ori</i> )]	This study
nrd1Δ <sup>CID(39-169)</sup> / YSB1754	<i>MATa; ura3-52; leu2-3,112; trp1-1; his3-11,15;</i> <i>nrd1Δ::HIS3; lys2Δ2; ade2-1; met2Δ1, can1-100;</i> [pRS314NRD1Δ39-169 ( <i>nrd1Δ<sup>CID(39-169)</sup>, TRP1,</i> <i>CEN</i> )]	This study
rna15-2/ rna15-2 W	<i>MATα; ura3-1; rna15-2</i>	Amrani et al., 1997 <sup>b</sup>
rna14-1/ rna14-1 W	<i>MATα; ura3-1; trp1-1; rna14-1</i>	Amrani et al., 1997 <sup>b</sup>

rna14-1, rrp6Δ::KAN/ YSB1970	<i>MATα; ura3-1; trp1-1; rna14-1; rrp6Δ::KANMX</i>	This study
rna14-1,nrd1-1/ YSB1980	<i>MATα; ura3-1; trp1-1; rna14-1; nrd1Δ::KANMX;</i> [pRS424nrd1-1 ( <i>nrd1-1, TRP1, 2 μ ori</i> )]	This study
rna14-1,nrd1-2/ YSB1981	<i>MATα; ura3-1; trp1-1; rna14-1; nrd1Δ::KANMX;</i> [pRS424nrd1-2 ( <i>nrd1-2, TRP1, 2 μ ori</i> )]	This study
rna14-1, nrd1Δ <sup>CID(39-169)</sup> /YSB1979	<i>MATα; ura3-1; trp1-1; rna14-1; nrd1Δ::KANMX;</i> [pRS314NRD1Δ39-169 ( <i>nrd1Δ<sup>CID(39-169)</sup>, TRP1, CEN</i> )]	This study
YJC610/ YF1406	<i>MATα; ura3Δ0; his3Δ1; leu2Δ0; met15Δ0; LYS2;</i> <i>nrd1Δ::KAN;</i> [pJC580 ( <i>NRD1-HA, LEU2, CEN</i> )]	Conrad et al., 2000
YJC1107/ YF1409	<i>MATα; ura3Δ0; his3Δ1; leu2Δ0; met15Δ0; LYS2;</i> <i>nrd1Δ::KAN;</i> [pJC720 ( <i>nrd1-102-HA, LEU2, CEN</i> )]	Conrad et al., 2000
Nrd1-HA, Rrp6-TAP/ YSB1967	<i>MATα; ura3Δ0; his3Δ1; leu2Δ0; met15Δ0; LYS2;</i> <i>nrd1Δ::KAN; RRP6-TAP::HIS3;</i> [pJC580 ( <i>NRD1-HA, LEU2, CEN</i> )]	This study
nrd1-102-HA, Rrp6-TAP/ YSB1969	<i>MATα; ura3Δ0; his3Δ1; leu2Δ0; met15Δ0; LYS2;</i> <i>nrd1Δ::KAN; RRP6-TAP::HIS3;</i> [pJC720 ( <i>nrd1-102-HA, LEU2, CEN</i> )]	This study
rrp4-1/ YRP1222	<i>MATα; ade1-100; his4-519; leu2-3, 112; ura3-52;</i> <i>rrp4-1</i>	Roth et al., 2005

<sup>a</sup>Strains were obtained from Open Biosystems TAP-fusion library collection

<sup>b</sup>Amrani, N., Minet, M., Wyers, F., Dufour, M.E., Aggerbeck, L.P., and Lacroute, F. (1997). PCF11 encodes a third protein component of yeast cleavage and polyadenylation factor I. *Mol. Cell. Biol.* 3, 1102-1109.

<sup>c</sup>Winzeler, E.A., Shoemaker, D.D., Astromoff, A., Liang, H., Anderson, K., Andre, B., Bangham, R., Benito, R., Boeke, J.D., Bussey, H., Chu, A.M., Connelly, C., Davis, K., Dietrich, F., Dow, S.W., el Bakkoury, M., Foury, F., Friend, S.H., Gentalen, E., Giaever, G., Hegemann, J.H., Jones, T., Laub, M., Liao, H., Liebundguth, N., Lockhart, D.J., Lucau-Danila, A., Lussier, M., M'Rabet, N., Menard, P., Mittmann, M., Pai, C., Rebischung, C., Revuelta, J.L., Riles, L., Roberts, C.J., Ross-MacDonald, P., Scherens, B., Snyder, M., Sookhai-Mahadeo, S., Storms, R.K., Veronneau, S., Voet, M., Volckaert, G., Ward, T.R., Wysocki, R., Yen, G.S., Yu, K., Zimmermann, K., Philippsen, P., Johnston, M., Davis, R.W. (1999). Functional characterization of the *S. cerevisiae* genome by gene deletion and parallel analysis. *Science* 285, 901-906.